

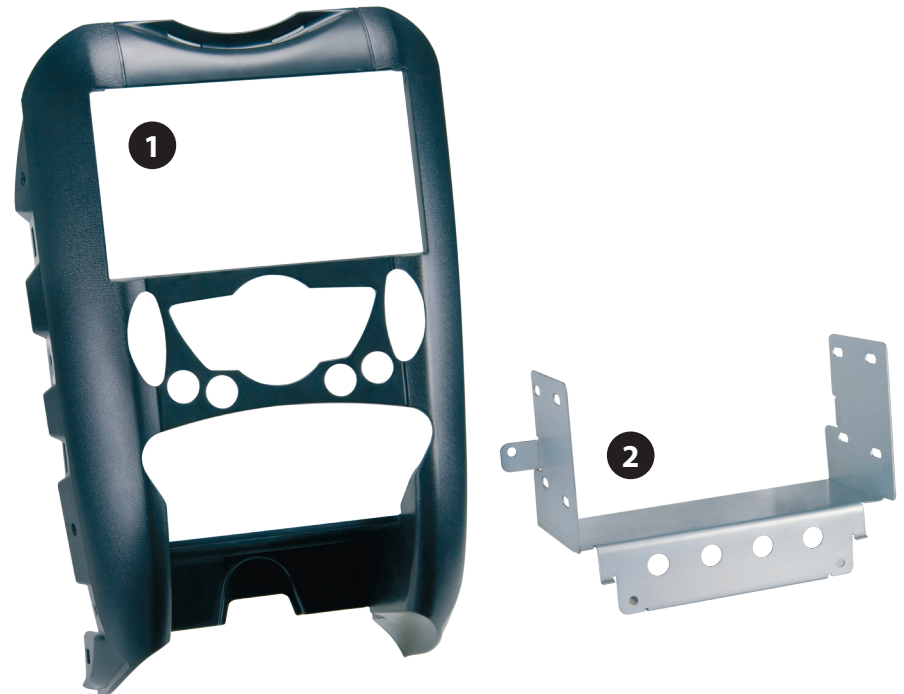


Installation Manual Double DIN Kit

Part-No: 381023-06

- **BMW Mini (R56)**
with automatic climate control

Compatible with double DIN devices



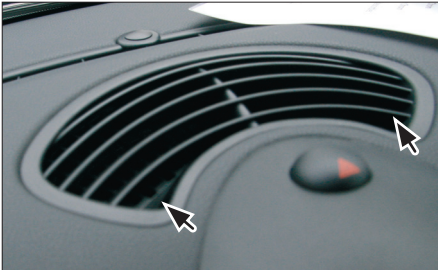
Double DIN Kit contents

- (1) Center console • (2) Mounting Bracket

Installation Manual Double DIN Kit 381023-06

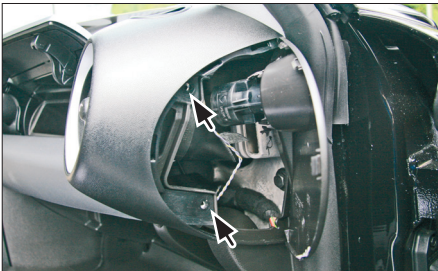


1. BMW Mini (R56) with automatic climate control



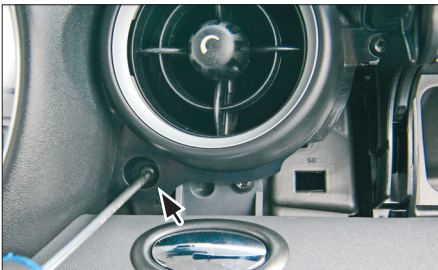
2. Clip out the air vent grill at the top of the dashboard

Remove 2 screws
(see arrows)



3. Unclip side panel

Remove 2 screws (see arrows)

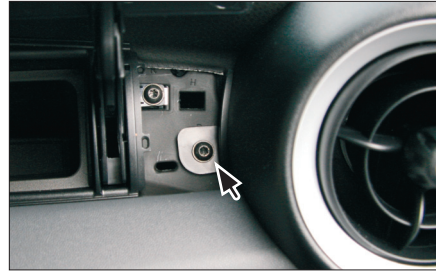


4. Open the glove box.
Remove decor panels at both sides

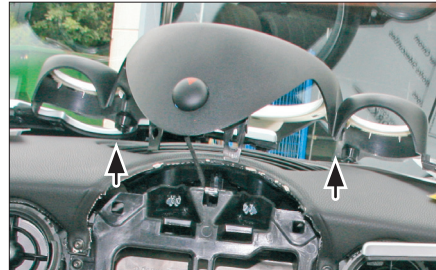
Remove screw under air vent
left and right side

*All installation work must be performed by a qualified professional installer only.
The manufacturer / dealer is not liable for any kind of incidental or indirect damages.*

Installation Manual Double DIN Kit 381023-06



5. Remove screw beside air vent



6. Remove cover of hazard light switch



7. Remove 2 screws of the rev counter

Remove decor panel



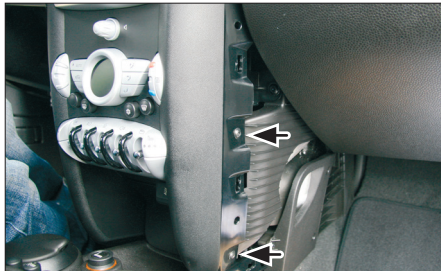
8. Remove 4 screws of the knee protector

proceed with step 9 on next page

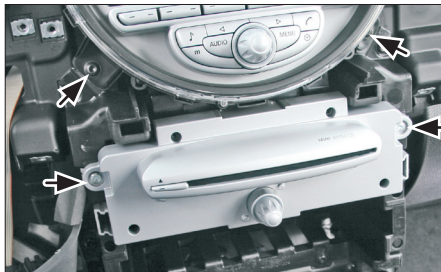
Installation Manual Double DIN Kit 381023-06



9. Open the lower glove box
Remove 3 screws
Remove knee protector



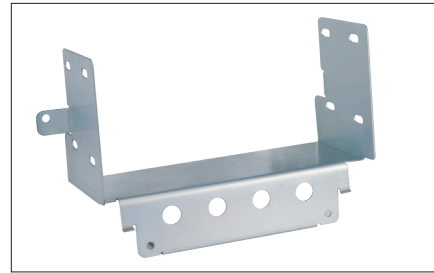
10. Unclip and remove side panels of the center console
Remove 4 screws (2 at each side)
Remove center console by pulling it towards your direction



11. Remove 4 screws, see arrows
Take out speedometer unit and head unit



12. Remove air condition control unit



13. Fix the Double-DIN navigation with the mounting bracket



14. Connect all required circuit points
Place the Double-DIN head unit at the dash board
Fix it with 2 screws



15. Mount the air condition control unit
Place new center console
Install everything in reverse order to finish installation

*All installation work must be performed by a qualified professional installer only.
The manufacturer / dealer is not liable for any kind of incidental or indirect damages.*