

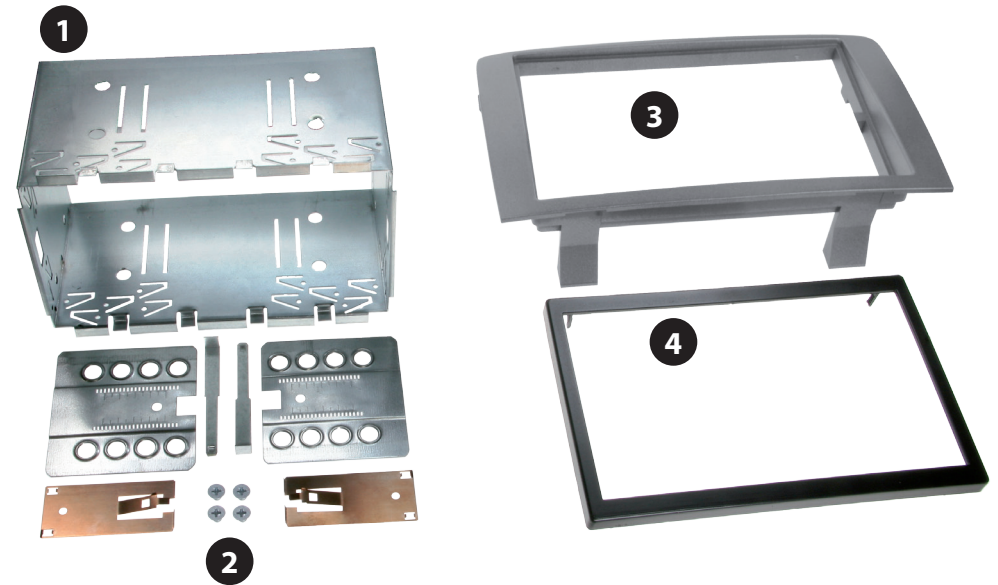


Installation Manual Double DIN Kit

Part-No.: 381150-03

• Lancia Musa

Compatible with double DIN devices



Double DIN Kit contents

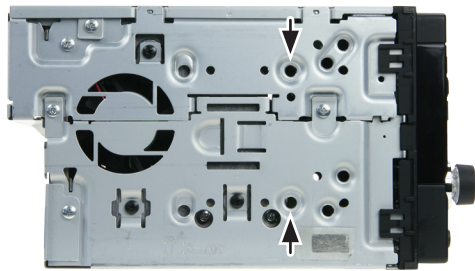
- (1) Metal Frame
- (2) Installation Kit
- (3) Facia Plate
- (4) Trim Frame

Installation Manual Double DIN Kit 381150-03



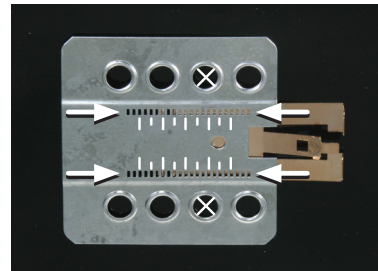
1. Insert radio-release keys
(see arrows)

Remove OEM Radio



(Beispielabbildung)

Mount the metal brackets with
the double DIN head unit



(Beispielabbildung)

*The position of the copper
coloured holder can be adjusted
to your needs for perfect fit.
(see sample)*

2. Place fascia plate at the dashboard
Push metal frame into the
fascia plate
Push double DIN head unit into
metal frame until it snaps in
Mount the trim frame

*All installation work must be performed by a qualified professional installer only.
The manufacturer / dealer is not liable for any kind of incidental or indirect damages.*