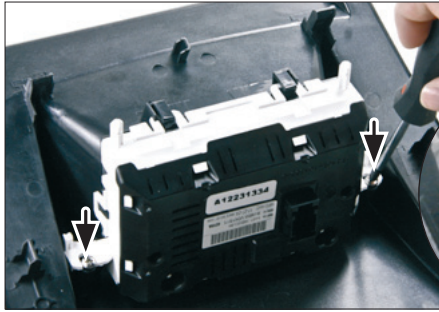
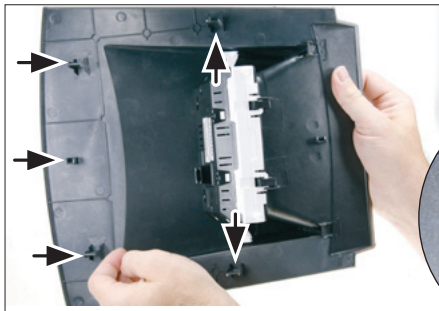
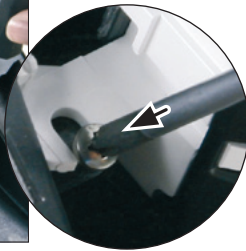




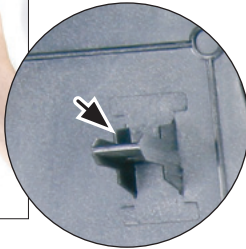
Installation Manual Double DIN Kit



9. Fix OEM display with 2 screws



10. Remove clamps from Ford OEM panel. Place clamps on new facia plate



11. facia plate with mounted OEM display



12. Connect all required circuit points of Double-DIN Navigation, mount it to Double DIN facia plate, place it on the dashboard.
Connect cables of OEM display
fix facia plate with mounted OEM display above Double-DIN Navigation

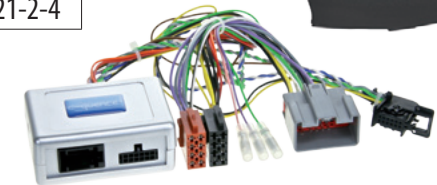
• **Ford Fiesta 2009->**
Models with display only

Info: Hazard light switch by Ford (No.: 15 19 127) may be required

Compatible with these double DIN devices

Double DIN Navigation

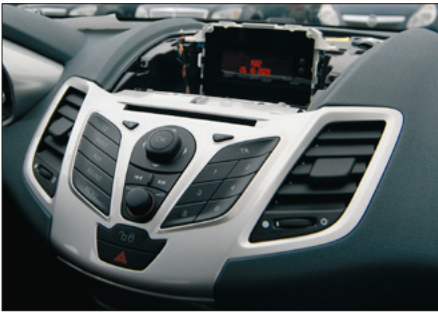
lead cable (for)	black	silver
Alpine	381114-21-1-1	381114-21-2-1
Becker	381114-21-1-0	381114-21-2-0
Blaupunkt	381114-21-1-5	381114-21-2-5
Clarion	381114-21-1-8	381114-21-2-8
JVC	381114-21-1-9	381114-21-2-9
Kenwood	381114-21-1-7	381114-21-2-7
Panasonic	381114-21-1-2	381114-21-2-2
Pioneer	381114-21-1-3	381114-21-2-3
Sony	381114-21-1-6	381114-21-2-6
Zenec	381114-21-1-4	381114-21-2-4



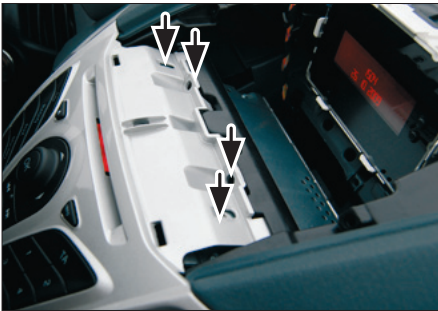
Stalk Interface



1. Unclip the display panel



2. Remove the display panel



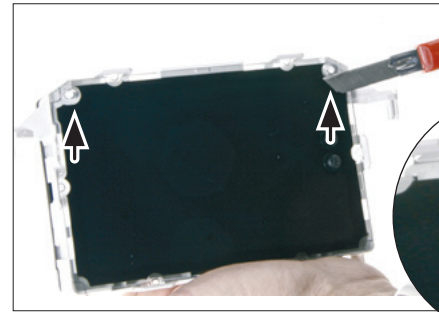
3. Remove the 4 screws of the OEM head unit



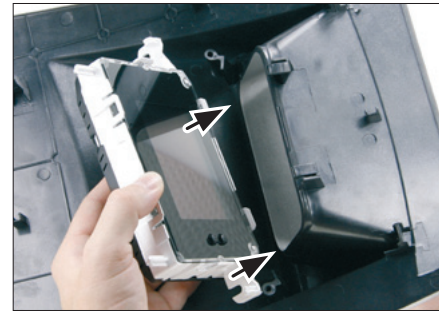
4. Remove the OEM head unit
Dismount the air vents
Mount the air vents to the new facia plate



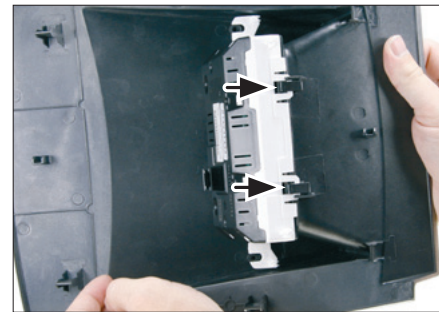
5. Remove the middle bar (cut at the position marked with arrows)



6. Remove OEM display. Cut away overlapping pins left and right



7. Mount OEM display to facia plate:
Turn facia plate upside down
Place OEM display top like shown on the picture



8. Push OEM display bottom until it snaps in