



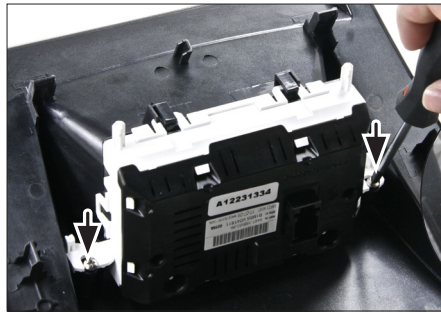
Installation Manual Double DIN Kit

Ford Fiesta 2009->
Models with display only

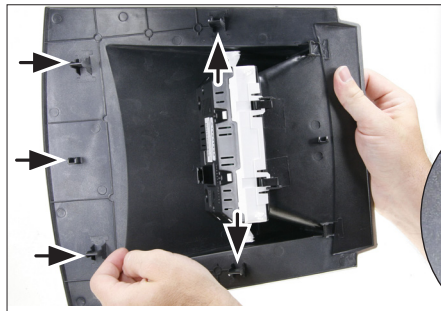
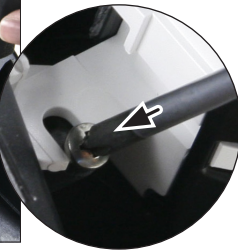
*Info: Hazard light switch by Ford
(No.: 15 19 127) may be required*

Colour	Part-No.: Double DIN	Part-No.: with pocket
black	381114-21-1	281114-21-1
silver	381114-21-2	281114-21-2

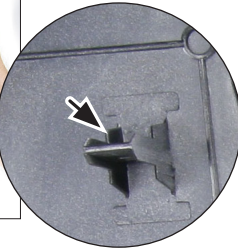
Compatible with double DIN devices



9. Fix OEM display with 2 screws



10. Remove clamps from Ford
OEM panel. Place clamps on
new facia plate



11. facia plate with mounted
OEM display



12. Connect all required circuit points
of Double-DIN Navigation, mount it
to Double DIN facia plate, place it
on the dashboard.
Connect cables of OEM display
fix facia plate with mounted OEM
display above Double-DIN Navigation

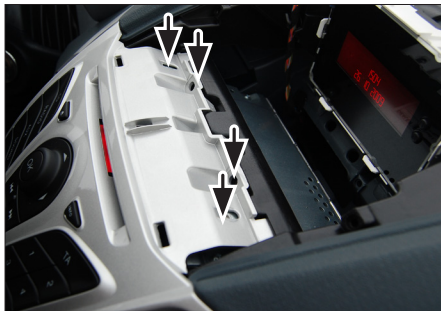




1. Unclip the display panel



2. Remove the display panel



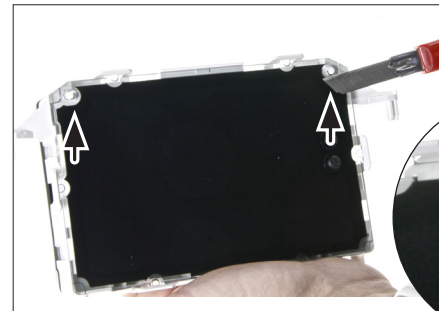
3. Remove the 4 screws of the OEM head unit



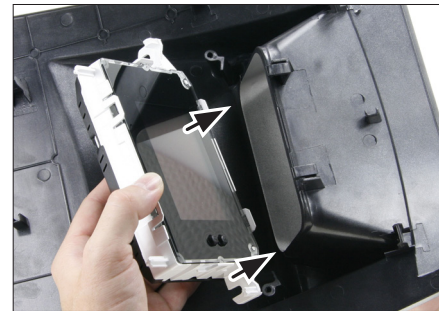
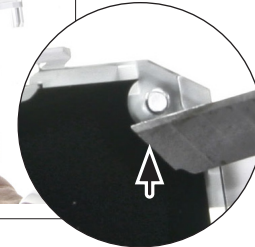
4. Remove the OEM head unit
Dismount the air vents
Mount the air vents to the new facia plate



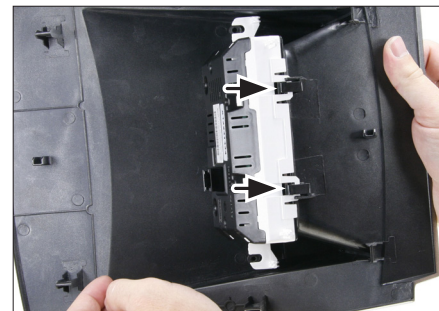
5. Remove the middle bar (cut at the position marked with arrows)



6. Remove OEM display. Cut away overlapping pins left and right



7. Mount OEM display to facia plate:
Turn facia plate upside down
Place OEM display top like shown on the picture



8. Push OEM display bottom until it snaps in