

6. Reconnect the two blue plugs to the airvent panel



7. Slide back airvent panel back into the place



8. Install new Relocation Panel.
The panel is very tight to clip in place, you will need to clip the top hooks first then lower clips



Installation Manual Double DIN Kit

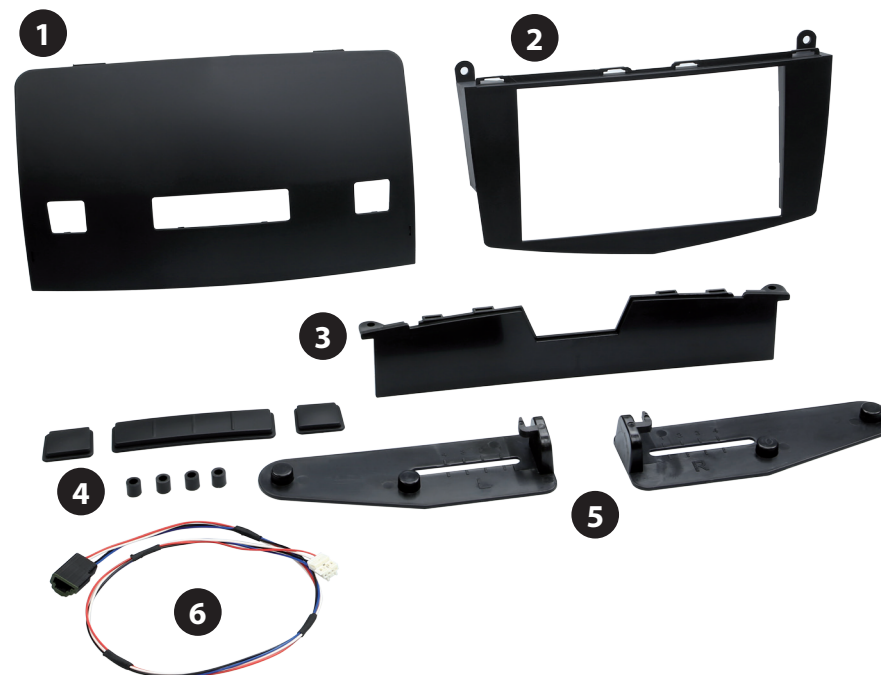
colour: black
part-no.: 381190-32-2

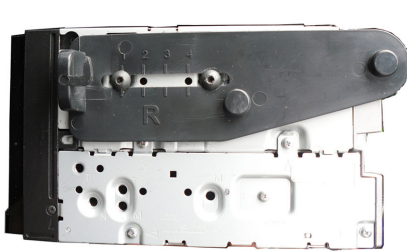
Mercedes C-Class (W204) 2007 ->
(Only for models with buttons in the lower part of the panel)

Compatible with these devices

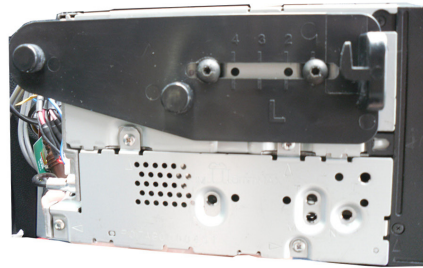
Kenwood Navigation

- (1) Relocation Panel
- (2) Facia place
- (3) Screw Base
- (4) Replacement Buttons
- (5) Mounting Brackets
- (6) Extension Lead



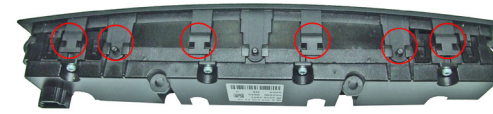


Right

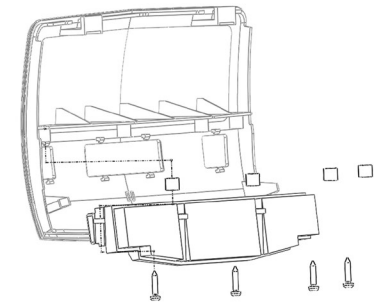


Left

1. Mount the brackets to both sides of the Double-DIN head unit



Detach the clips as shown above on bellow

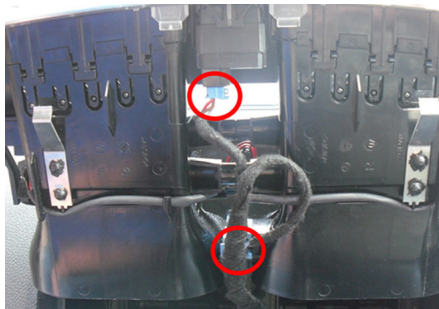


Disassemble buttons to relocation pannel

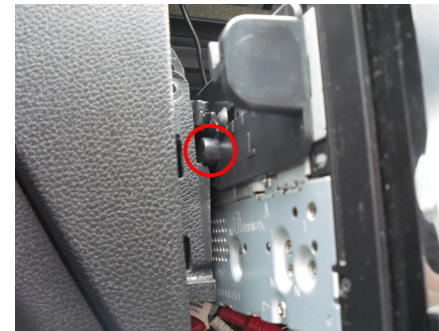
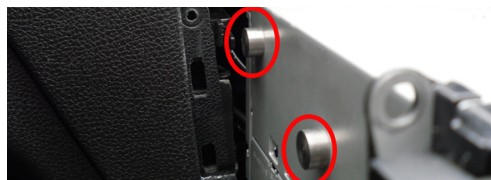
2. Remove air vents



3. Disconnect the two blue plugs from underneath vents



4. Guide OEM head unit from the dash. There are runners (see photo)



5. Use extension lead to extend OEM wiring from buttons to new location



Ensure all wires are clear of the aperture. Slide head unit into dash.

Ensure that the guide knobs are lined up with the guide rails as shown



Install screw base by locating the screws from display removal