

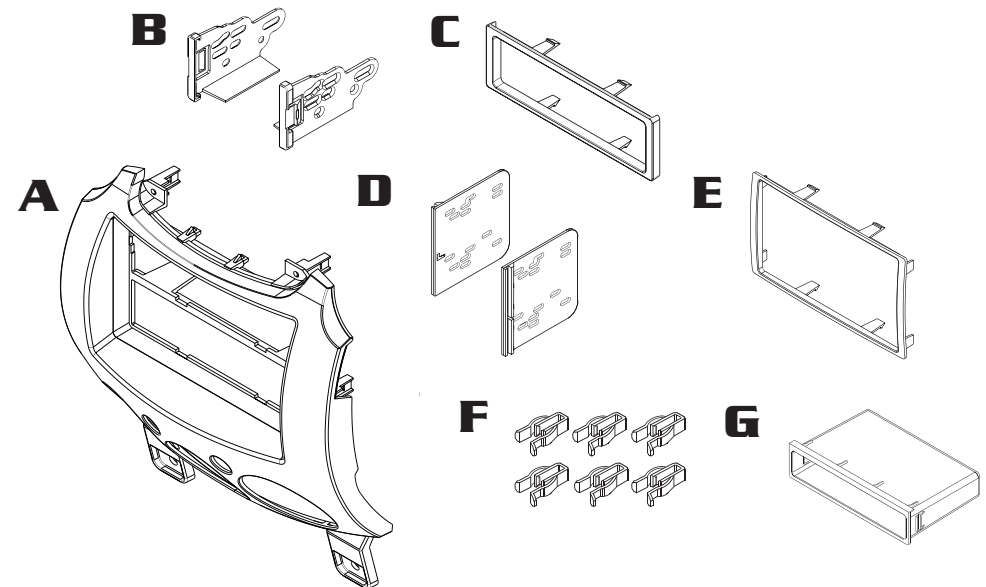
colour: black

part-no.:
381170-15

• **Mazda 2 2007->**

Compatible with these Double-DIN devices

Double DIN Navigation



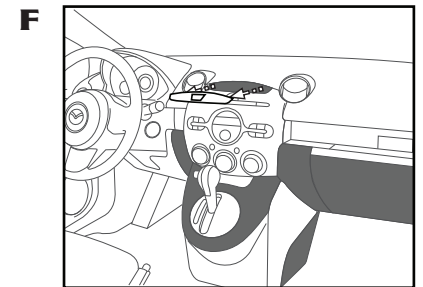
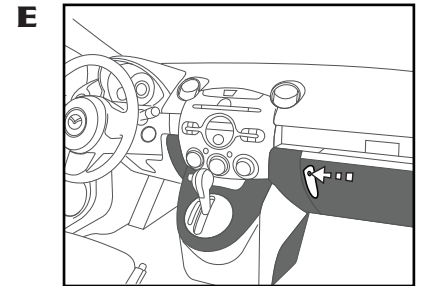
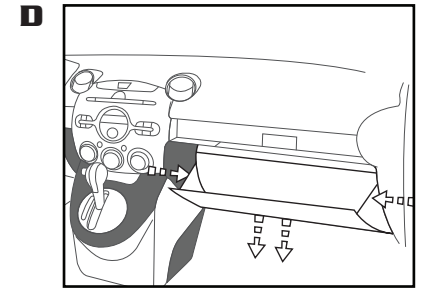
- (A) facia plate
- (B) 1-DIN brackets
- (C) 1-DIN trim plate
- (D) 2-DIN brackets
- (E) 2-DIN trim plate
- (F) panel clips
- (G) pocket

*All installation work must be performed by a qualified professional installer only.
The manufacturer / dealer is not liable for any kind of incidental or indirect damages.*

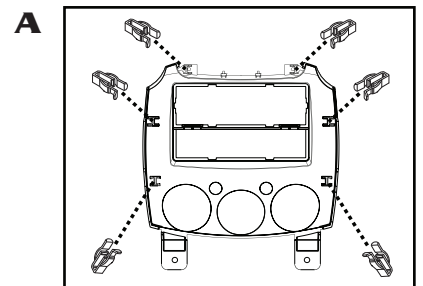
Mazda 2

Mazda 2

- 4** Drop the glove compartment by releasing return cable and then squeezing the middle of the compartment to allow the stoppers to pass the frame. (Fig. D)
- 5** Remove hidden 10mm bolt holding the radio in place then remove radio from dash. (Fig. E)
- 6** Remove the hazard/ light switch plate from the top of the radio panel and install it back into the same location after the kit is installed in the dash. (Fig. F)



- 1** Slide the (6) plastic Panel Clips provided with this kit onto the legs located on the back of the Radio Housing. (Fig. A)



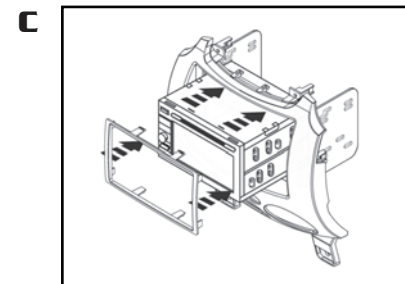
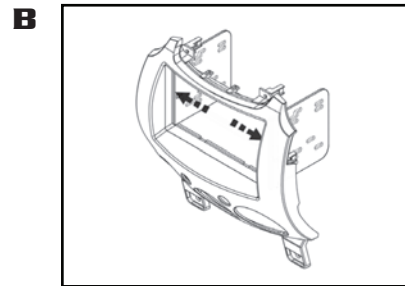
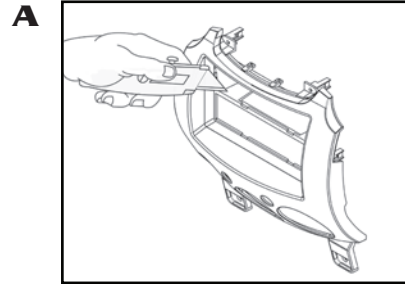
Mazda 2

Double-DIN head unit provision

- 1** Cut and remove the center bar from the radio housing. (Fig. A)
- 2** Snap the Double DIN brackets to the inside edges of the Double DIN trim plate. (Fig. B)
- 3** Slide the Double DIN head unit or stacked ISO head units into the bracket/radio housing assembly and secure the Double DIN head unit or stacked ISO head units to the assembly using the screws supplied with the radio. (Fig. C)
- 4** Snap the double DIN trim plate into the radio housing. (Fig. C)
- 5** Locate the factory wiring harness in the dash.

Re-connect the negative battery terminal and test the unit for proper operation.

- 6** Reassemble dash in reverse order of disassembly.



Mazda 2

1-DIN head unit provision

- 1** Slide the 1-DIN cage into the Radio Housing and secure by bending the metal locking tabs down. (Fig. A)
- 2** Snap the pocket into the bottom opening of the radio housing. (Fig. B)
- 3** Slide the aftermarket head unit into the cage and secure. (Fig. C)
- 4** Locate the factory wiring harness and antenna plug in the dash.
- 5** Reassemble dash in reverse order of disassembly.

