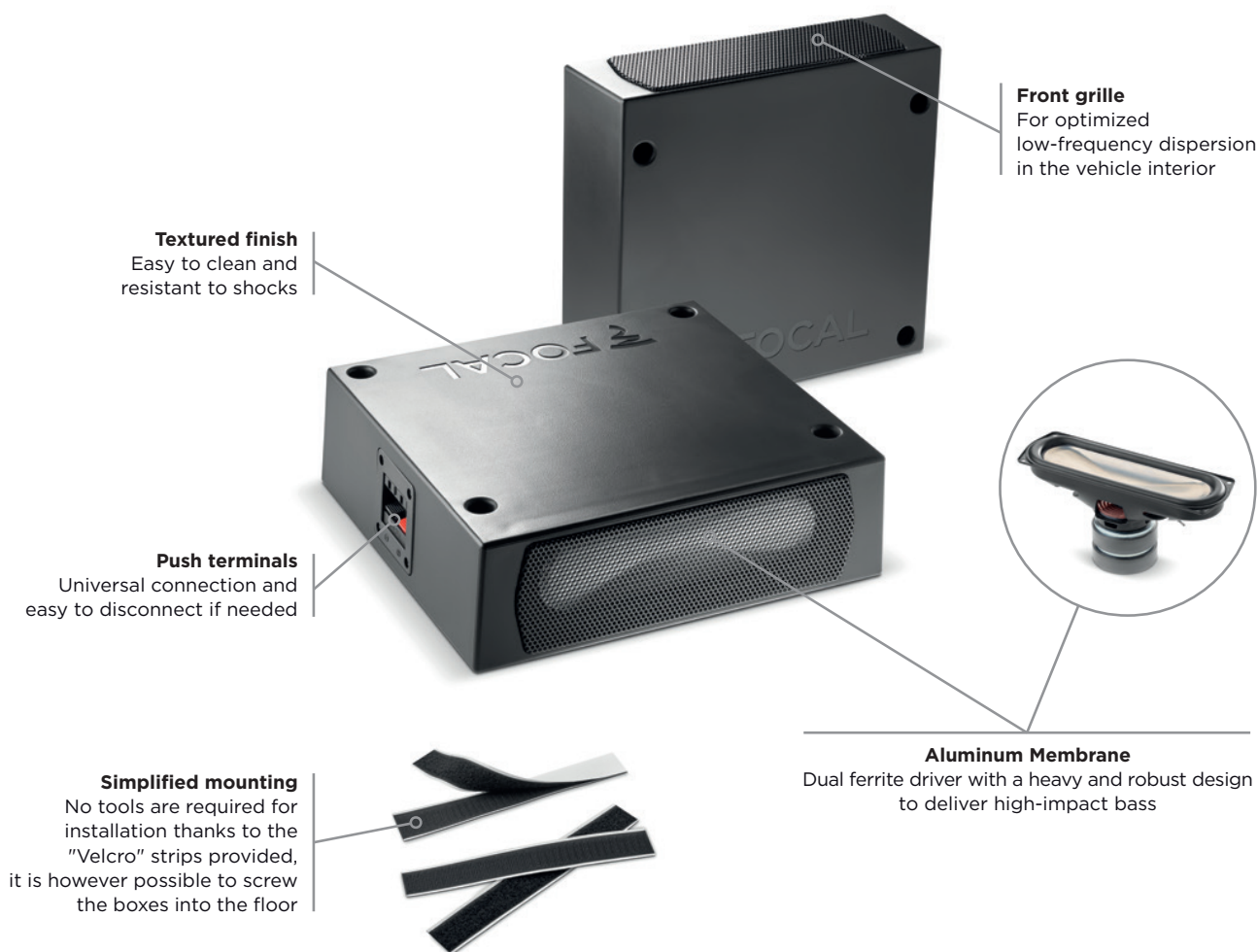


PRODUKTINFORMATION

ISUB TWIN

Specification sheet

The pair of ultra-compact ISUB TWIN passive subwoofers is an innovative solution that considerably increases the bass impact of an in-car audio system, all this without any loss of space in the interior or trunk. These boxes simply slide under the seats of almost any vehicle and can be fixed directly with the velcros provided or screwed into the floor. We recommend to power these boxes with the Impulse 4.320 amplifier, whose two front channels will remain available to connect a pair of speakers in the front doors for example.



Key points

- Quick and easy installation without any modifications needed on the vehicle
- Invisible integration in the car's interior
- High fidelity and high power capability
- Double ferrite loudspeaker specially developed for the ISUB TWIN
- Designed to perfectly match the Impulse 4.320 amplifier and Plug&Play Focal Inside® products

Check the available space before installing in the desired locations.

Type	Underseat passive subwoofers
Max. Power	2 x 200W
Nom. Power	2 x 100W RMS
Sensitivity (2.83V/1m)	83dB
Impedance	2Ω
Dimensions (WxDxH)	10 ^{1/4} x 9 ^{1/2} x 3 ^{1/8} " (260x240x80mm)
Cone	Aluminium
Frequency response	50 - 150Hz
Weight	5.95lbs (2.7kg) x 2
Voice coil diameter	3/4" (20mm)
Surround	Butyl