

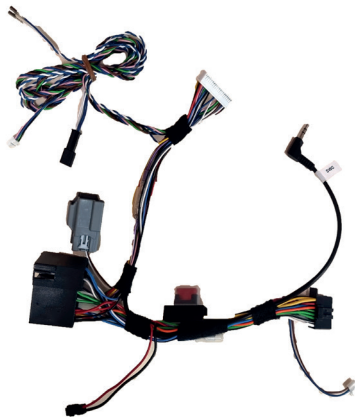
# Pioneer

## Installation guide for :

- AVIC-Z1000D11-CHU
- AVIC-Z1000D12-C
- AVIC-Z1000D16-C



Fiat Ducato model year '21 - Open dash only



Interface

Depending on the kit, the interface may look different



Installation kit - metal brackets, plastic fascia and rotary command keys



1  
Original dashboard setup  
Remove the two storage pockets



2  
Remove the airvents left an right by pulling  
They are attached with two pins

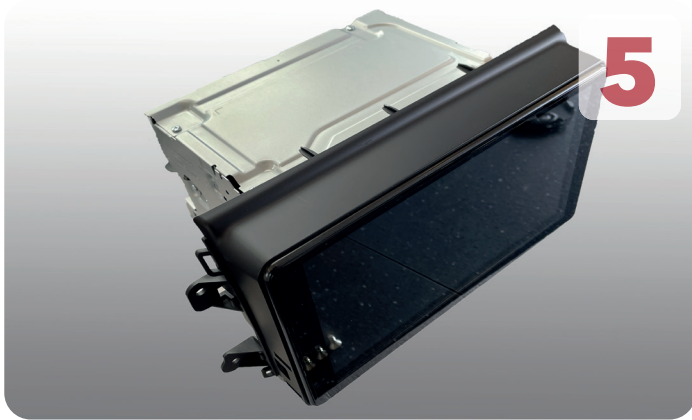


3  
Remove four screws using a T20 screwdriver  
Keep them a side for later

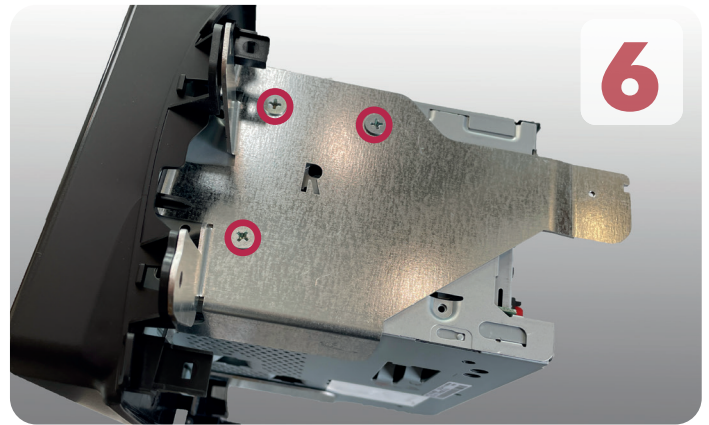


4  
Remove the original frame from the dashboard

# Pioneer

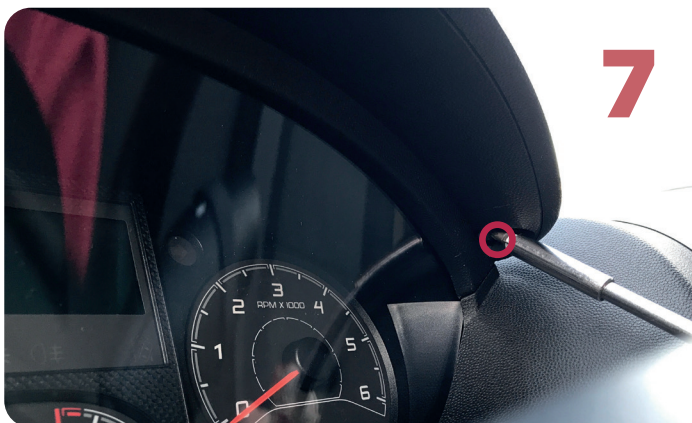


Slide the Pioneer unit into the fascia panel



Mount the left and right metal bracket to the Pioneer unit and plastic trim

**! Steps 7 to 18 are only for AVIC-Z1000D11-CHU kits with a head up display !**



Remove two screws at the bottom of the tachometer visor



Remove the tachometer visor  
It is still secured with clips



Remove two screws from the tachometer

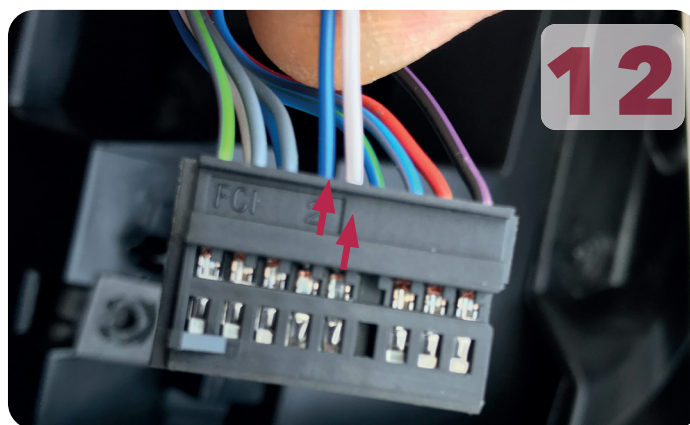


Remove the connector by sliding the red tab away from the cables

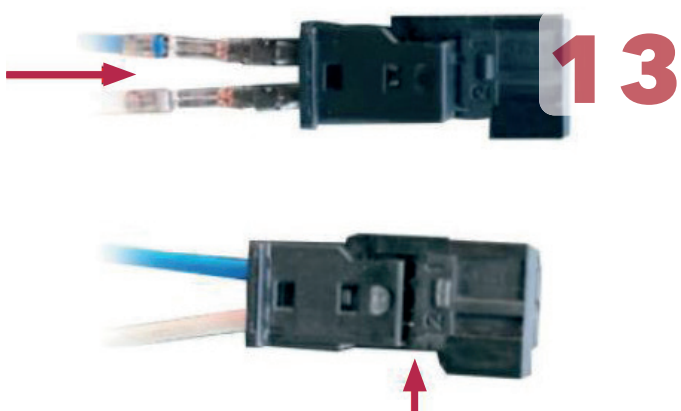
# Pioneer



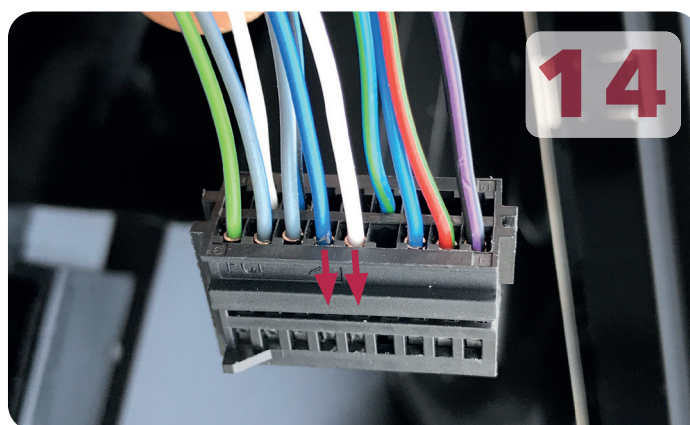
Cut the cable tie and slide the cables out towards the bottom



Remove the blue and white cable from the connector by pressing with a small screwdriver



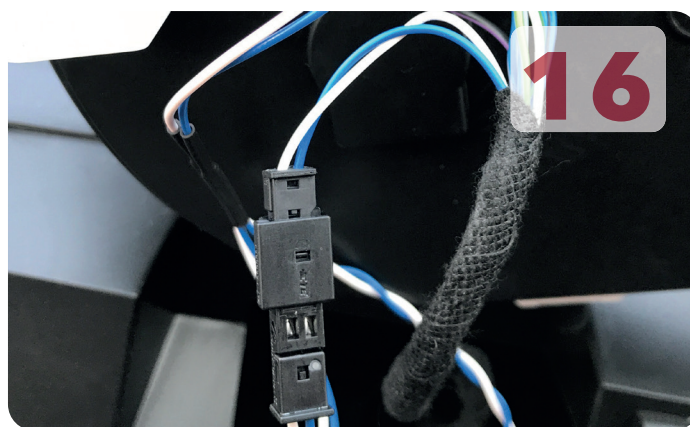
Insert the two pins in the supplied plug  
Press the cover to lock the pins



Install the blue and white cable from the interface in the tachometer connector (pos. 4 & 5)



Slide the cables back into the main housing and secure with new cable tie or electric tape

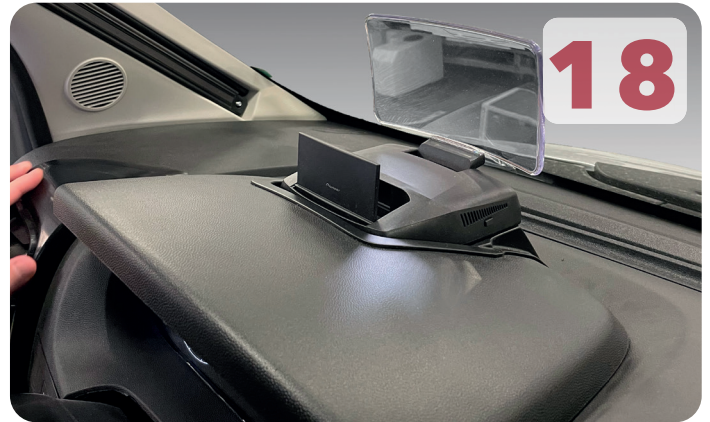


Connect back to the tachometer and to the interface

# Pioneer



Install and connect the head up display onto the new tachometer visor

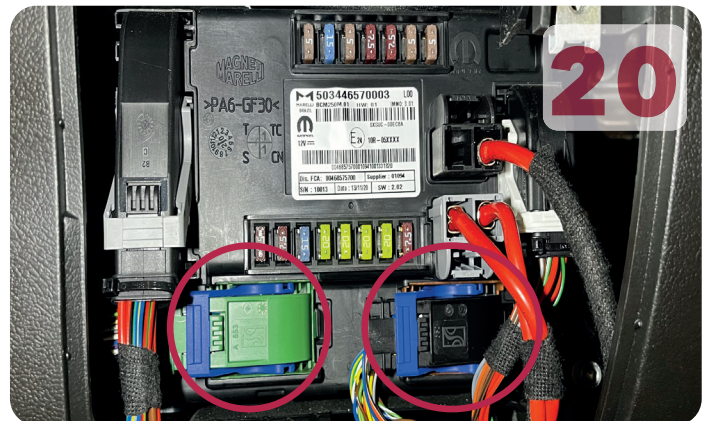


Install the visor with head up display and secure with the original screws

**! Steps 19 to 24 are only for AVIC-Z1000D12-C & AVIC-Z1000D16-C kits !**



Open the fusebox underneath the steering column



Locate the green and black connector and remove them

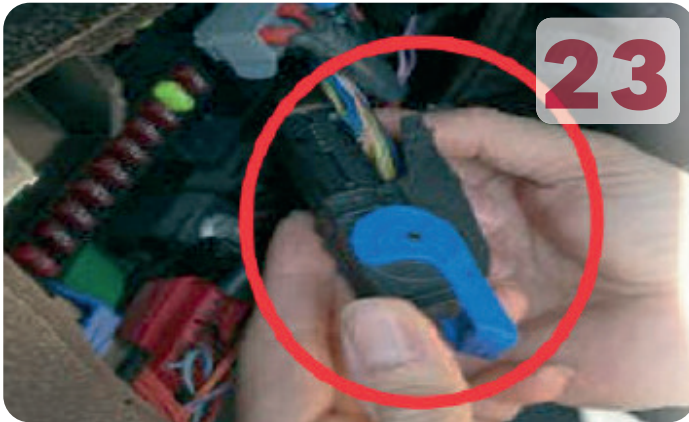


Open the green connector and slide the cables out

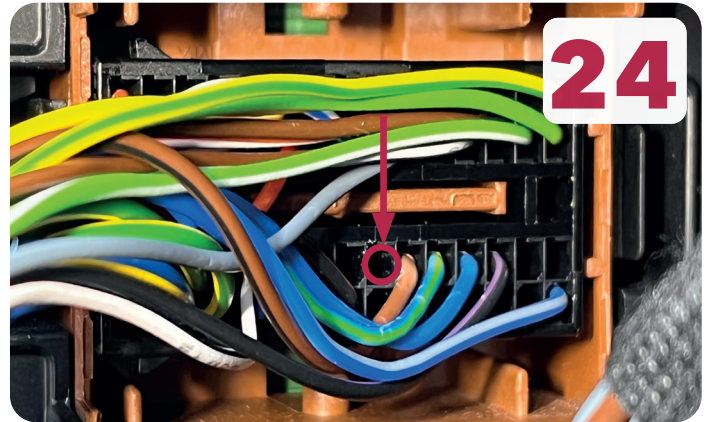


Connect the violet/white cable (reverse signal) to the white/blue cable in pin seventeen.

# Pioneer

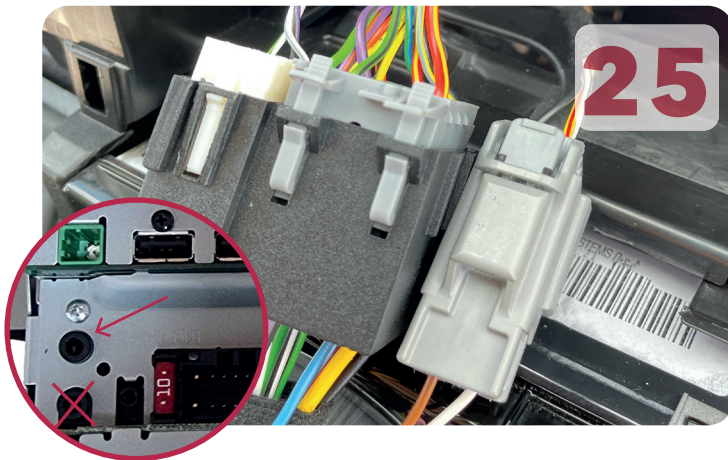


Open the black connector and slide the cables out



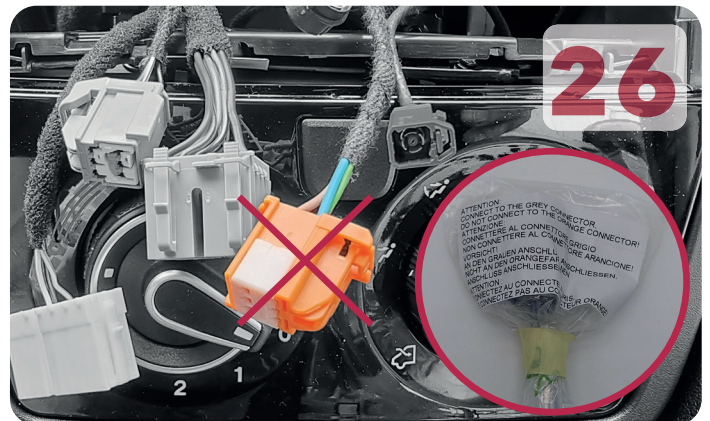
Insert the pink cable pin (speedpulse) to the open position twenty-two (22)

**! Steps 25 & 26 are only for AVIC-Z1000D12-C & AVIC-Z1000D11-CHU kits !**

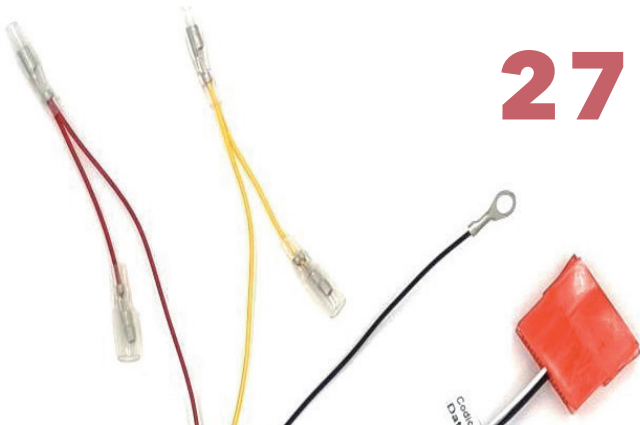


Connect the main harness  
Make sure to use the GREY connector  
!Use top plug for steering wheel controls (W/R)!

**! Step 27 is only for AVIC-Z100016-C !**



DO NOT USE THE ORANGE CONNECTOR  
See the warning label on the interface



Connect battery and accessory power to the main harness of the unit



Put the cable for the rotary commander through the side opening of the panel

# Pioneer



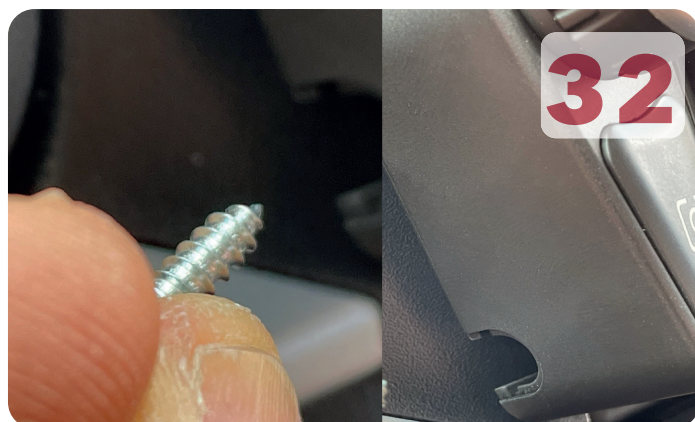
Slide the unit in the dashboard and secure with the originals screws



Reinstall the airvents with the rotary command cable still outside



Connect the rotary command and slide it upwards into the panel



Secure with small screw in the opening on the side



Put the plastic cover over in the screw opening



Final result