

DASHCAM APP

NORDVÄL DC102 & DC103



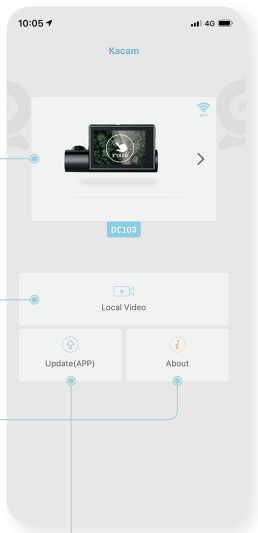
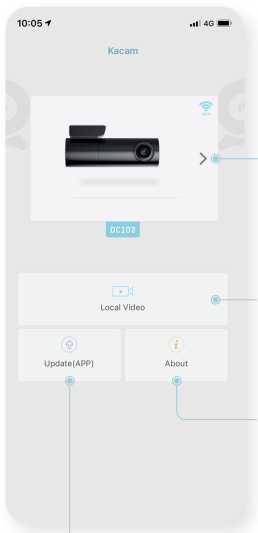
NORDVÄL

TABLE OF CONTENTS

Getting started	2
Main interface	3
Settings DC102	4
Settings DC103	6
Full-screen	7
Download recordings	8

GETTING STARTED

Connect your dashcam with the app. Make sure your phone is connected to the dashcam's Wi-Fi in order to proceed.

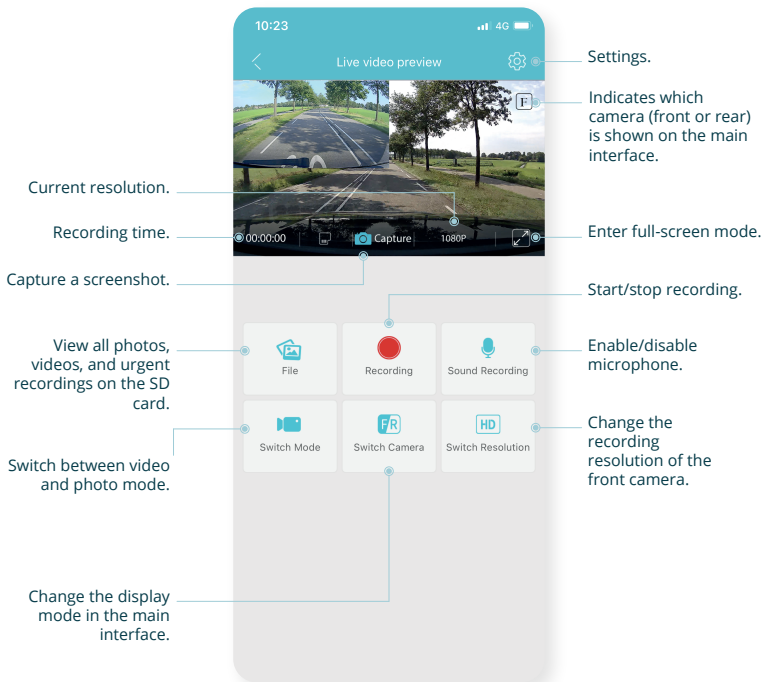


See the videos that you have downloaded onto your phone. You can watch them even when the dashcam is not connected.

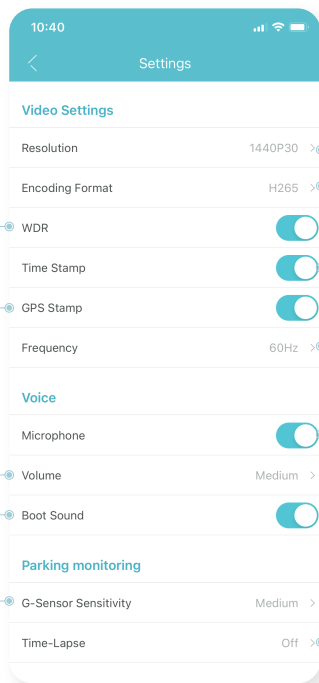
Check the app's version, available updates, and cache use.

Go to the App Store and update the app to the newest version.

MAIN INTERFACE



SETTINGS DC102



Enable/disable the WDR dynamic contrast.

Enable/disable the GPS stamp in videos and photos.

Change the camera volume.

Enable/disable the startup sound.

Change the sensitivity of the G-Sensor. (high, medium, low, off)

Change the recording resolution of the front camera.

Change the encoding mode.

Enable/disable the date stamp in your recordings.

Change the electric frequency. (Note that this can affect the functionality and quality of the recording)

Enable/disable microphone.

Enable/disable the time-lapse function.

SETTINGS DC102

The loop recording determines the length of the video segments. This makes it easier to find certain events when needed.

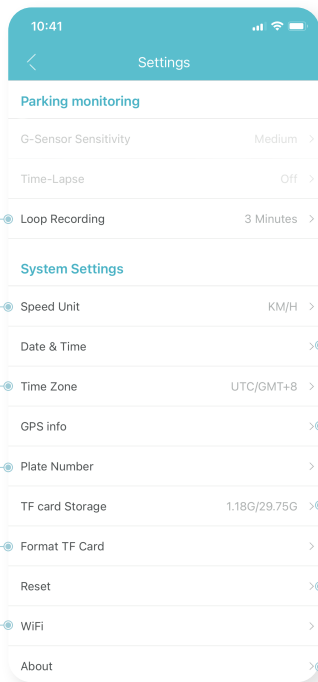
Change the speed/time units.

Change the time zone of the camera.

Enter your license plate.

Format the SD card.

View and/or change the dashcam's Wi-Fi credentials.



Synchronize the date and time between your phone and the dashcam.

View GPS info.

Used and remaining storage of the SD card.

Reset the settings.

Check the dashcam's software version and details.

SETTINGS DC103

The loop recording determines the length of the video segments. This makes it easier to find certain events when needed.

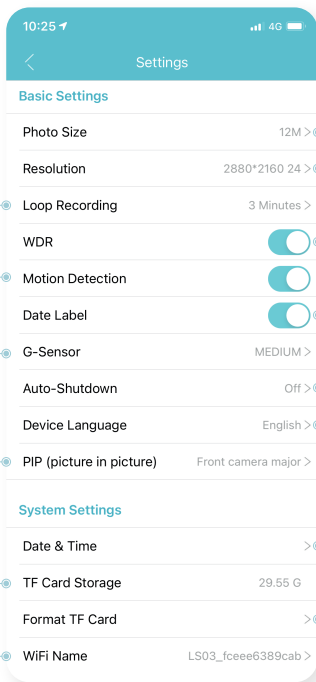
Enable/disable motion detection.

Change the sensitivity of the G-Sensor. (high, medium, low, off)

Change the display mode in the main interface.

Remaining SD card storage space.

View and/or change the dashcam's Wi-Fi credentials.



Choose the photo resolution. (12M, 8M, 5M, or 2M)

Change the recording resolution of the front camera.

Enable/disable the WDR dynamic contrast.

Enable/disable the date stamp in your recordings.

Set an auto-shutdown time .

Choose the language the dashcam will display.

Synchronize the date and time between your phone and the dashcam.

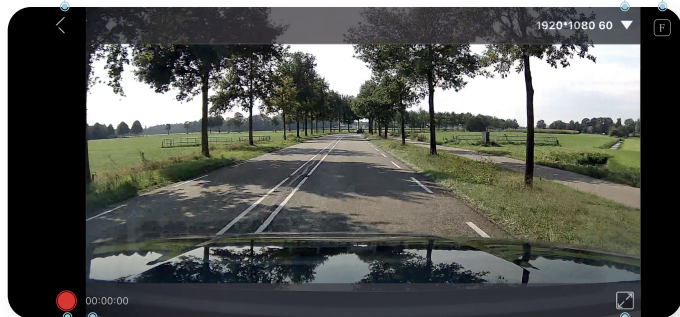
Format the SD card.

FULL SCREEN

Go back.

Indicates which camera (front or rear) is shown on the main interface.

Change the recording resolution of the front camera.



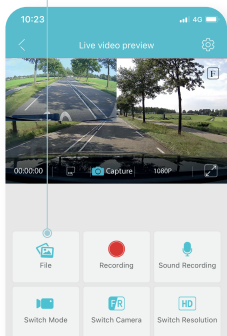
Exit full-screen mode.

Recording time.

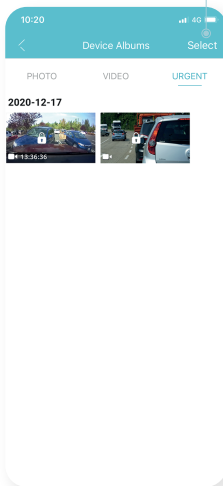
Start/stop recording.

DOWNLOAD RECORDINGS

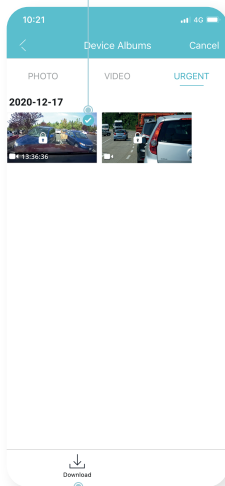
1. Click "File" in the main interface.



2. Click "Select" on the right-top corner.



3. Select the video(s) you want to download.



4. Click the "download" button.
The files will be saved to the gallery of your device.



NORDVÄL
Smart technology