

# CTSHY013.2

## Hyundai Steering Wheel Control Interface



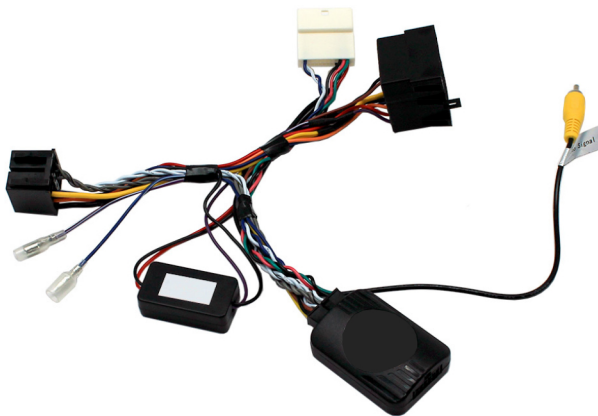
Plug and Play



USB Updateable



Works with  
CAN-Bus



# INSTRUCTION MANUAL

## CTSHY013.2

Hyundai steering wheel control interface for Hyundai vehicles with CAN-Bus.

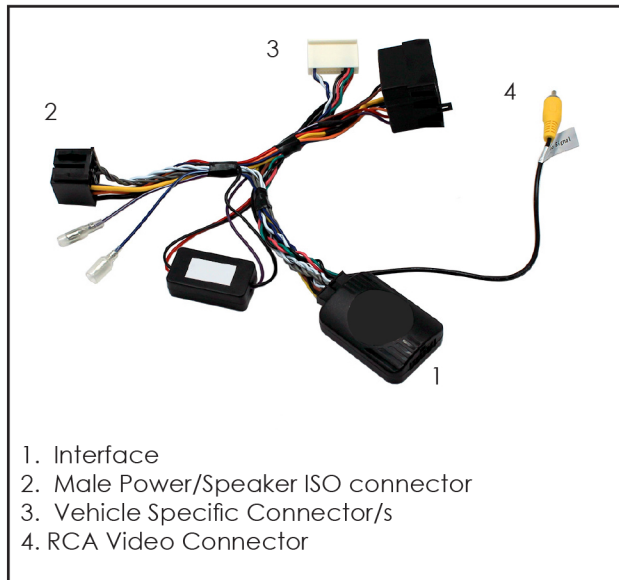
### Product Contents

- Interface
- Harness
- Instruction

### Application

Hyundai ix35 2015>

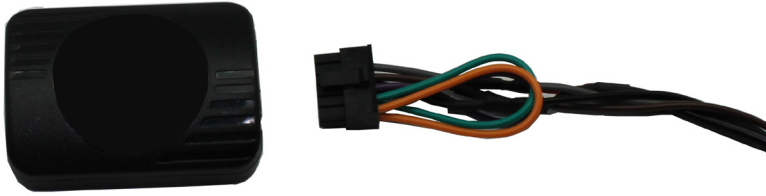
For Vehicles with OEM  
Navigation, Amplifier, and  
Camera



### Prior to installation

Read the manual prior to installation. Technical knowledge is necessary for installation. The place of installation must be free of moisture and away from heat sources. Please ensure you use the correct tools to avoid damage to the vehicle or product.

1. Remove and disconnect the original head unit.
2. Connect the 12 way molex connector of the head unit patch lead (supplied separately) to the interface.



3. Connect the opposite end of head unit patch lead to the head unit steering wheel control input on the back of the aftermarket head unit. This may be a 3.5mm jack plug or a wire input depending upon the head unit brand being fitted. Please see the head unit installation manual for further information on where to connect.

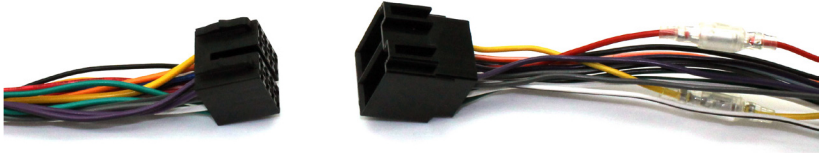
**Important Note: This step must be completed before connecting power to the interface. Failure to do so may result in no steering wheel control function.**



4. Connect the 14 way molex connector to the interface.



5. Connect the male power/speaker ISO harness to the female power/speaker ISO harness from the aftermarket head unit.



For aftermarket head units which do not have an ISO connector the interface uses the following wiring colours:

| Wire Colour | Function       |
|-------------|----------------|
| Yellow      | Permanent 12V  |
| Black       | Ground         |
| Red         | 12V Ignition   |
| Orange      | Illumination   |
| Blue        | Antenna Remote |
| Pink        | Speed Pulse    |
| Green       | Park Brake     |
| Purple      | Reverse        |

| Wire Colour  | Function              |
|--------------|-----------------------|
| Purple       | Right Rear Speaker +  |
| Purple/Black | Right Rear Speaker -  |
| Green        | Left Rear Speaker +   |
| Green/Black  | Left Rear Speaker -   |
| Grey         | Right Front Speaker + |
| Grey/Black   | Right Front Speaker - |
| White        | Left Front Speaker +  |
| White/Black  | Left Front Speaker -  |

6. Connect the female vehicle specific connectors to the male vehicle connectors.

7. Attach the yellow 'Video Signal' RCA connector to the Video Output port on the head unit to retain the reverse camera and test head unit for correct operation.

8. Steering Wheel Control Functions

