



*...connecting to the aftermarket*



iPod Interface



USB Interface



Bluetooth Module

# Instruction Manual

iPod Interfaces

USB Interfaces

Bluetooth Module



## Introduction

The Connects2 vehicle specific iPod interface allows for the direct connection of an iPod to the external CD changer port of a factory fitted OEM car stereo.

## Features

- Play iPod music through the car stereo
- No loss of sound quality
- Charges iPod
- Controlled via radio or steering wheel controls

The Connects2 USB interface connects directly to the CD changer port for digital sound quality, providing instead, play / control of music stored on a USB/SD card via the factory radio or steering wheel buttons.

Both interfaces can be used to connect any portable audio device via an aux-in connection

### ***This manual covers installation and operation of***

- Connects2 iPod interface
- USB interface
- Optional Bluetooth Module

Please refer to the relevant section relating to the product you have purchased and ensure that everything is included before beginning installation.

### **Included in the iPod product:**

- 1.Connects2 iPod interface with vehicle specific CD changer connection
- 2.iPod connection cable
- 3.User Manual
- 4.Bluetooth Module (optional)

### **Included in the USB/SD product:**

- 1.Connects2 USB interface with vehicle specific CD changer connection
- 2.3.5mm line in cable
- 3.USB extension cable
- 4.User Manual
- 5.Bluetooth Module (optional)

## Bluetooth Module operating Instructions

### Optional Bluetooth Module

Use the interface as a hands-free car kit with any Bluetooth mobile phone/device and to wirelessly stream music to your stereo using the optional Bluetooth module.

### SETUP

- 1) Ensure ignition / stereo is powered off
- 2) Access Bluetooth menu on phone/device
- 3) Activate 'search' and 'discovery' mode to pair with Bluetooth module (See device manual for further guidance)
- 4) Select Connects2 when available devices are displayed
- 5) Enter 0000 when pairing code is required
- 6) Select ok/connect to pair the Bluetooth module
- 7) Calls can now be made / received.

Pairing should only be required once as most phones/devices will automatically connect after the initial pair.

To pair a new device, press and hold the BT button and follow the above setup instructions

### Use of Phone

- Sound will automatically be routed to your car stereo audio system when a call is made / received.
- Answer a call - directly on your phone, using the call/answer button on the Bluetooth module or using the FFWD>> button on some stereos
- Calls can be ended by pressing the Bluetooth button
- To reject a call, press and hold the Bluetooth button

### Wireless Music Streaming

Music can be streamed to your stereo using a compatible A2DPBluetooth device. Songs can be selected on the device and sent via Bluetooth. Songs can be played/paused/ended using the call answer button.

## USB/SD Interface – Operating Instructions

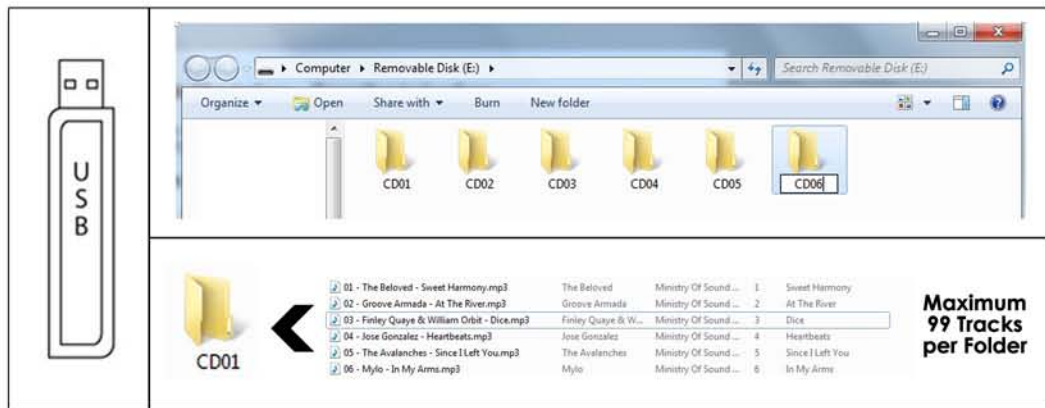
The USB Interface has a built in MP3/WMA encoder allowing play and control of MP3 or WMA files from your stereo

### USB/SD Setup

- 1) Ensure USB/SD is formatted to FAT32. All other files should be deleted
- 2) Create folders on your USB/SD card (NB: the stereo is limited to selecting the amount of folders that corresponds with the number of disk spaces in the CD changer) The folders should be named 'CD01', 'CD02' etc...up to a maximum of 10 folders, depending upon how many disks the original CD changer can support.
- 3) Load MP3 or WMA files into each folder as required. Maximum of 99 files per folder.
- 4) Connect your USB/SD card to the stereo, power on and select CD changer

### Operating USB/SD via stereo

- To select folders, move through the discs according to stereo controls. (Stereo recognises each folder according to the number of discs on the CD changer)
- Use 'Seek' button on radio / steering wheel controls to search tracks in a folder
- Seek within a track using the FFWD>> and <<RWD buttons
- 'Random' button will select tracks randomly unless the 'skip' button is pressed. To continue to play random tracks, press 'Random' button twice.



## Installation – iPod and USB Interface

### Connecting the interface to the CD changer port

- 1) Remove car stereo (This may require use of removal keys or removal of dashboard panels – check vehicle guidelines)
- 2) Locate the CD changer port at the rear of the stereo
- 3) Connect the vehicle specific connector the CD changer port (some vehicles may require connection via the harness – refer to the stereo handbook if you are unsure)
- 4) Ensure that the connection is pushed firmly into place to ensure a full connection

Audi, Seat, SKODA, VW Installation – with existing CD Changer  
CD Changer retention is possible on these models allowing continued use of CD changer with the interface.

### Connecting interface with existing factory CD changer

- 1) Remove CD changer from back of stereo
- 2) Connect CD changer to the Black (female) connector on the interface
- 3) Connect the Blue (male) connector to the CD changer port (Where your original CD changer was previously connected)

NB

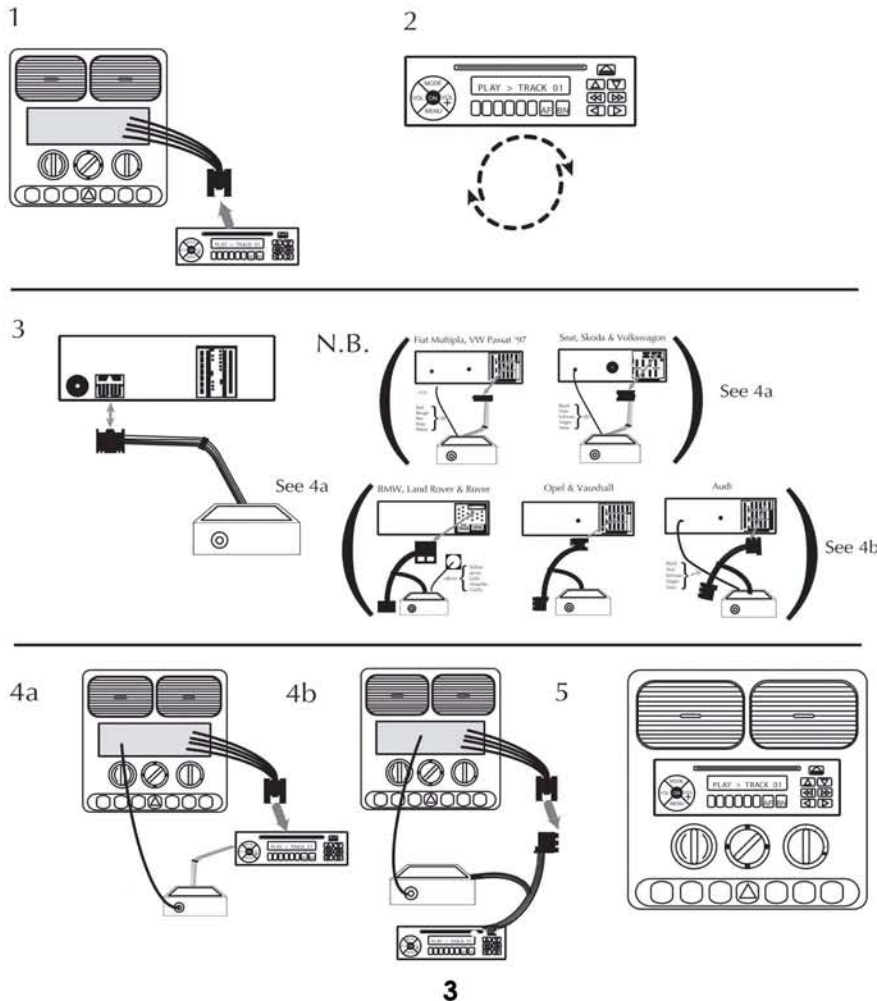
If there is more than one port with a similar connection or you are unsure of which port to use, refer to the stereo handbook in order to ensure you select the CD Changer port.

The Black (female) connector should be left disconnected if there is no existing CD changer as it is not required

## Audi, Seat, Skoda and VW Installation – Ground Connection

Interfaces in these vehicles require grounding and need to be connected to an earthing point to function properly.

- 1) Locate the two ground connection wires (Black with different sized ring connectors)
- 2) Connect at least one wire to an earthing point (e.g. metal body of stereo) (For safety, connecting both grounding wires is recommended)
- 3) Ensure the ground cable(s) are securely connected or interface will not work



## Factory Fitted CD changer

Audi, Seat, Skoda and VW have the capacity to retain CD changer and iPod interface. In order to switch between CD Changer and iPod, the FM Button must be selected in between each use of iPod / CD Changer

E.g. If iPod is playing ...press FM Button and the CD Button ... to switch to CD Changer. To switch back to iPod ... FM Button and then CD Button again

## Connecting an Auxiliary Device

Any Audio device can be connected to the "Aux" port (the optional 3.5mm Aux input cable can also be used)

NB

The stereo screen will display - CD8-88

Volume can be adjusted but it is NOT possible to control auxiliary device through stereo / steering wheel controls

## iPod Interface limitations

Playlist numbers are limited to 2 digits

Some functions (Disk select, FFWD>>, RWD<< etc.) on different stereos may operate differently and therefore may not be accurate to this manual (Refer to stereo handbook for operations)

Text is only supported on some models

## Installation completion

Once connection to the radio is complete:

- 1) Route the cable to the desired location (e.g. behind stereo / glovebox etc.)
- 2) If you are installing iPod interface, connect the iPod cable with the round connector to the interface and route to desired location
- 3) Check that all connections at the back of the stereo are firmly in place.
- 4) Check that everything is functioning correctly
- 5) Re-fit stereo

## Optional Bluetooth Module

Use the interface as a hands-free car kit with any Bluetooth mobile phone/device and to wirelessly stream music to your stereo using the optional Bluetooth module.

### Installation Instructions:

- 1) Connect Bluetooth module to micro USB port on interface
- 2) Route Bluetooth module to within 'easy reach' location
- 3) Route the microphone cable to close speaking location
- 4) With stereo and ignition on, check the Bluetooth module is receiving power and ready to be paired with Bluetooth device

## iPod Interface Operating Manual

**Please ensure that your iPod/iPhone has the latest software version**

Connect iPod to interface via the supplied cable, power on the stereo and switch to CD changer mode. This will switch to your iPod which is now ready for use.

There are 2 operating modes:  
Manual and Playlist

Use the 'Disk' buttons on your stereo to switch between modes

CD (Disk + / -) Button	Operation
Disk 1	Switch to Manual Mode
Disk 2	Playlist 1
Disk 3	Playlist 2
Disk 4	Playlist 3
Disk 5	Playlist 4
Disk 6	Playlist 5

### Manual Mode (Select using Disk 1 button on stereo)

Use Manual mode if full access to iPod is required. ( iPod retains controls and Screen display )

Tracks can also be selected using the seek button on your stereo or steering wheel control

Seek within a track using the FFWD>> and <<RWD buttons

NB

In Manual mode – screen information on stereo is inaccurate



## **Playlist Mode (Select using Disk 2 button on stereo)**

The first playlist on your iPod will start playing

Each 'Disk' button on your stereo represents a playlist from your iPod

'Track timer' is accurate

Repeat button functions normally

Seek within a track using the FFWD>> and <<RWD buttons

'Random' button will select tracks randomly unless the 'skip' button is pressed. To continue to play random tracks, press 'Random' button twice.

Playlist track number is displayed

iPod will remember last Track and playlist when ignition is switched off or source changed

NB  
During Playlist mode – screen will display 'Do Not Disconnect'

## **Background Noise/Interference**

After installation, you may experience some noise or interference from the cars electronic circuitry. If this is the case:

- 1) Connect the additional cable together (with male to female bullet connector)

### **AUDI ISO Interfaces (20Pin adapter)**

Audio stereos with the 20pin ISO connection (non-quadlock) will require the specifically designed interface which is supplied with a separate 20pin adapter. Connecting 20pin adapter

- 1) Release the dark blue connector (press clip inwards)
- 2) Attach the dark blue connector to the black (male) connector on the interface
- 3) Attach the red and green connectors to the light blue (female) connector on the interface

### **Honda and Toyota Y connection cables**

If the existing CD changer port is already occupied a Y connection cable is required

- 1) Remove the existing connection and plug the female end of the Y cable into the changer port
- 2) The Y cable has two connections – connect one to the interface and the other to the existing connection

### **Nissan Connection**

Nissan interfaces have additional cables:

- 1) BAT wire is live and must be connected to the power supply
- 2) The ACC wire must be connected to the ignition live

NB:  
Refer to wiring diagram for your stereo (usually found on the back of the unit)